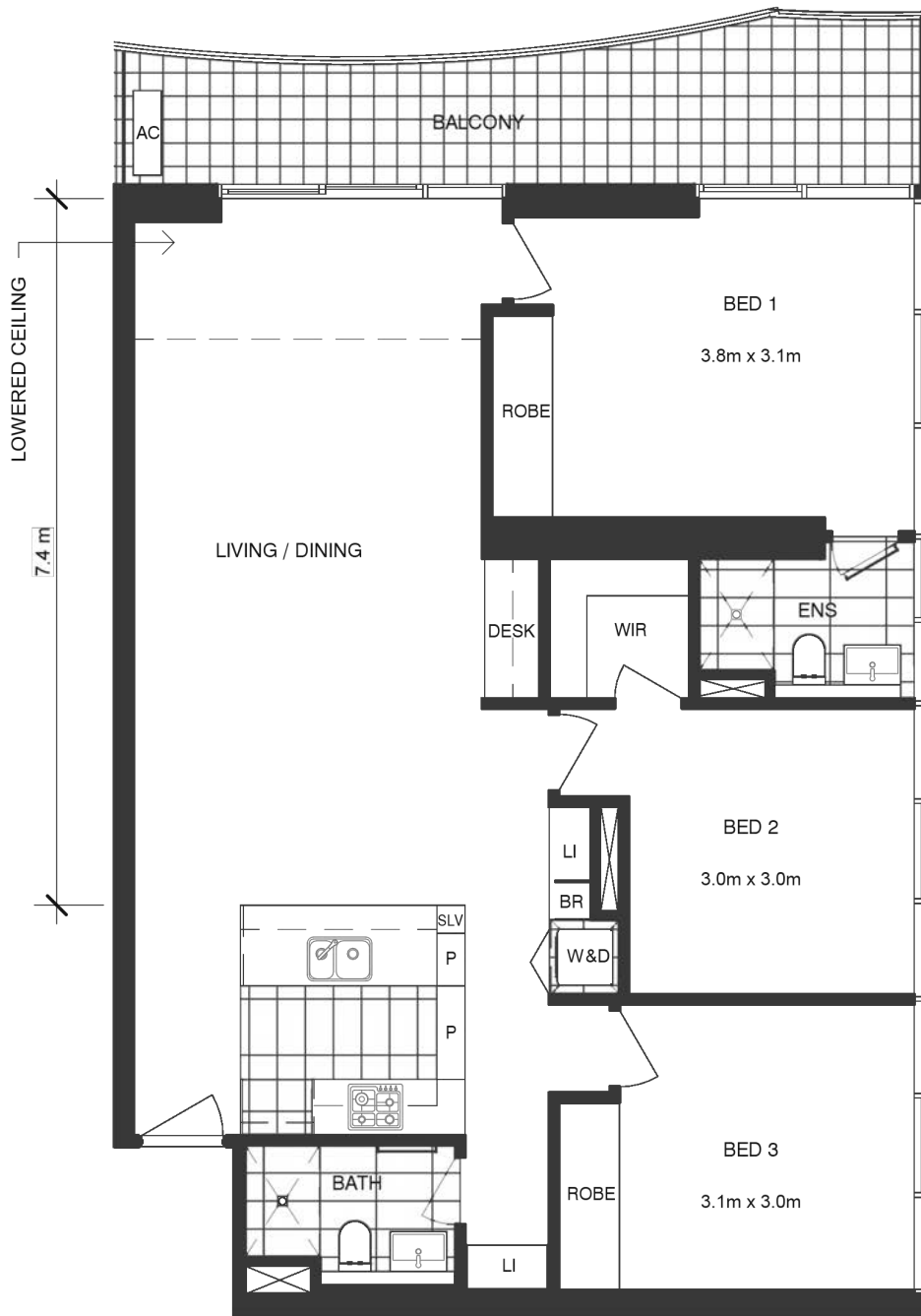


THREE BEDROOM
TYPE Q



560
LONSDALE ST

MELBOURNE
GRAND



114m²

TYPE Q



3



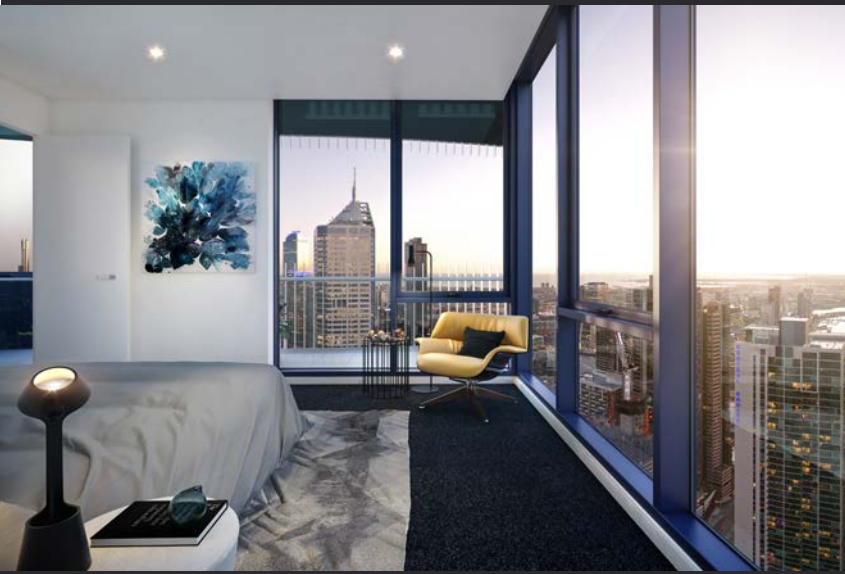
2



1 + store

Prime Corner Apartment

Large city home featuring corner master bedroom with bright ensuite, study with integrated desk and deluxe kitchen with breakfast bar.





An entire floor of facilities, including a spacious lounge, formal banquet room, luxe theatre, coffee bar, indoor pool, sauna, gym, yoga studio, BBQs and outdoor relaxation areas. An impressive grand foyer is complemented by concierge services, keyless building entry and video intercoms.

EXCLUSIVE RESIDENT FACILITIES



MELBOURNE
GRAND

MelbourneGrand.com

+613 9278 8888 • 1800 638 888

INSPECT 7 DAYS

560 Lonsdale Street, Melbourne

For sale off-the-plan. Artist impressions are for indicative purposes only and advertised prices may be of a different design and/or view.
© Copyright September 2017. Central Equity Limited.